



Industrial System
installation
Hydraulic (oil) - Electrical
Maintenance
Technologies



THE STORY

The company was founded in the year 2000 and is the ideal continuation of P.F.M., which was born in 1991 by Pinna Fulvio, and was subsequently transformed into a collective company in 1996.

It was founded to develop work on mechanical and industrial system in Portovesme (CI).

Very soon the capacity and strength of the enterprise was put in the disposal of the sector allocated to dams and also the sector of renewable energy, with the system of supply so call: Turnkey plant.

Thanks to the 20 years of managerial, technical experience, the P.M.F. s.r.l. was able to name a series of labor practices in other island territories for primary companies such as:
CONSORTIUM for REMEDIATION,
ENEL s.p.a. PRODUCTION etc.

THE ACTIVITY

P.F.M. is specialized in the planning, supply and installation of production of electrical energy supplies, industrial supplies, and to prepare and regulate the control of emptying of dams and relative maintenance.

The activities of the company is identified as:

- 1. Planning**
- 2. Supply**
- 3. Assembly**
- 4. Installation**
- 5. Maintenance**

Carpentry, operations of emptying below/above, strengthening pipelines, hydraulic systems in carbon steel and / or stainless steel welding with GTAW / SMAW / STT procedure, electrical system and electrical machinery, protective treatment on steel (sanding and varnishing).

Every activity is performed in respect System of Quality management according to Norma UNI EN ISO:2008

The possession of a testimony SOA category OG5 classification III has given a major prominence to the technological capacity of the company.

THE TESTIMONY AND CERTIFICATION

Certification of the quality system

ISO: 9001 : 2008

COMPANY ACCREDITATION : CERSIST s.r.l.

PRIMARY COMPANY: ACCREDIA

CERTIFICATE N°: SGQ 165/12

DATE OF ISSUE: 16/04/2012

ACTIVITY CERTIFICATE: Planning and installation of electro-mechanics and electrical industrial systems and hydraulic (oil) System maintenance.



TESTIMONY SOA

Company accreditation: PROTOS SOA S.p.a.

CERTIFICATE N°: 11618/11/00

DATE OF ISSUE: 10/07/2014

CATEGORY: OG5 'Dams'

CLASSIFICATION: III

HEAD OFFICE AND ADDRESSES



The head office of the company operates from a site in Iglesias, in the industrial zone, in Loc Sa Stoia s.n.c.

The above is composed of a workshop of about 700 sq.mt and is annexed with offices and services in a developed area of 5000 sq. mt.

There are two entrances, one pedestrian, and a second entrance which connects directly with the entrance of the workshop.

Annexed is a large parking area which permits the storage of materials and also allows the transit of articulated vehicles.

The company mainly works on contract business, the operations are made up of 20 units, which considers the request of the client and the speed of the delivery.

Therefore the operations unit is always manned by extremely qualified personnel, who have been specially selected, according to the special requirements dictated by Quality Management / Running Systems of P.F.M. s.r.l.

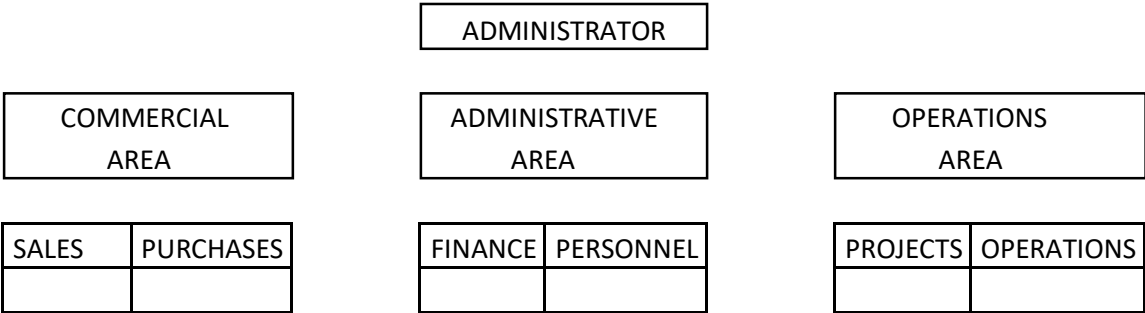
The accurate selection of the working staff is synonymous with not only reliability but also of guarantee.

COMPANY REFERRALS

- ENEL S.P.A. PRODUCTION S, A PISANO 120 street, PISA city
Project personnel
- CONSORTIUM for REMEDIATION of ORISTANESE, CAGLIARI street ORISTANO city
Technical Personnel
- COMETO SCRAL, F. DE LUCIA square, ROME city
Project Personnel
- CONSORTIUM for REMEDIATION of SARDEGNA CENTRAL, S. BARBARA 30 street, NUORO city
Technical Personnel
- CENTRAL METRO, BOLZANO street TORINO city
Project personnel
- S.I.T., LEONARDO DA VINCI street, MORTARA city
Project Personnel
- CONSORTIUM ATB, STATION street, FORTEZZA city
Project Personnel
- ALGHERO CITY COUNCIL, SANT'ANNA street, ALGHERO city
Project Personnel

- ENTE ACQUE DELLA SARDEGNA, MAMELI 88 street, CAGLIARI city

ORGANISATION CHART



WORKS

(1997) ENEL RIVA CALZONI: refurbishment/restoration of electric oil system and revision of the above/ below ventilation fans, at the Pontechinale (CN) Dam.

(1998) ENEL RIVA CALZONI: Modernization of the discharge turbines, consistent with the revision and modification, and smoothing of the two sluices. Plus the carrying out of the hydraulic application, central hydraulics, tubes, TIG welding on stainless steel and electrical signal control panels, hydro-electrical center at Quart Aosta.

(1998) E.A.F. CAGLIARI: work on conduit operations for the transport of water.

(1999) SARDA SILICATI: work on the metal structure and tubing on the production system at Florinas (SS).

(2000) A.E.M. TORINO – RIVA CALZONI: work on the barricading for the central hydro-electrical system at San Mauro Torinese (TO).

(1998/1999/2000) SIT MORTARA (MT) GRUPPO SAVIOLA: assembly of manufacturing systems such as: shaping /forming, redler conveyor, building and assembling stairway, air system piping, water, structural parts.

(1997/1998/1999/2000/2001) SIA SPA VIADANA (MN) GRUPPO SAVIOLA production system part such as: work on the procession and revision of production systems such as: conveyors belts, redler conveyor, forming, gear reduction.

(1999) ABB ASTON POWER – UDINE: pipe-line assembly, pylons, adders, oil dynamic system etc, system for fume elimination “Acciaierie Von - Moos” Lucerna (CH).

(2001) ALTO TEMO DAM - CONSORTIUM for REMEDIATION of NURRA: providing adequate room for manoeuvring and draining, furnishing and assembling hydraulic cylinder and various maintenance, at Roccadoria Monteleone (SS).

(2001) SANTA VITTORIA DAM (OR CONSORTIUM for REMEDIATION of ORISTANESE: extraordinary maintenance on irrigation works and sluices, gravel, with revision of the relative hydraulic cylinders.

(2001) ALCOA EUROPE SPA: various maintenance at the Iglesias (CI) establishment.

(2002) G.T.O. SPA OTTANA (NU): construction and assembly of the pipe-line to supply steam, heat, water etc.

WORKS

(2002) SELI SPA VORTEX HYDRA, DAM DEL MENTA (RC): assembly of intake structure DN 1600.

(2003) SPA SRL, OLAI ORGOSOLO DAM (NU), CONSOTIUM of GOVOSSAI: utilization of intake structure DN1000 and emptying below and exhaustion.

(2003) CENTRAL METRO SCARL METRO TORINO: assembly and welding equipment T.B.M.

(2003/2004) ENEL GREEN POWER, CANTONIERA BUSACHI DAM (OR): assembly and welding of penstock DN 3000 on central TIRSO.

(2003/2004) ENEL GREEN POWER, CANTONIERA BUSACHI DAM (OR): assembly and welding of penstock DN 3500 on central TIRSO2.

(2004) ENEL GREEN POWER HYDROELECTRIC PLANT at TIRSO 1 (OR): project, supply & assembly of central drainage system.

(2004) ENEL GREEN POWER HYDROELECTRIC PLANT at TIRSO 2 (OR): project, supply and assembly of central drainage system.

(2004/2005) ENEL GREEN POWER HYDROELECTRICAL PLANT – CEDRINO LAKE (NU): project, supply and assembly of penstock.

(2004) ITALCEMENTI – SELI SPA, MONTEGIGLIO TUNNEL (BG): assembly of the hydraulic lifting system and the ventilation system for advancement.

(2004/2005) ENEL GREEN POWER, HYDROELECTRICAL PLANT - CEDRINO LAKE (MU): project, supply and assembly of central drainage system.

(2004/2005) ENEL SPA, HYDROELECTRICAL PLANT LAKE MACCHERONIS POSADA (NU): project, supply, assembly of strengthened conduit and relative accessory operations.

(2005/2006) CARBOSULCIS SPA: various carpentry, metal works.

(2006) ABBANOIA SPA: maintenance on ground sluice at Olai Dam.

(2006/2007) CONSORTIUM for REMEDIATION at GALLURA, CALAMAIU DAM on RIVER LISCIA : work on completion of the public lighting and maintenance on existing operations; works regarding authorization to obtain maximum flooding.

WORKS

(2008) CONSORTIUM for REMEDIATION of SARDEGNA MERIDIONALE: repair oil electrical system and remote controls of the Rio Leni Dam, Monte Arbus.

(2008) CONSORTIUM ATB – SELI SPA, BRESSANONE: works on the soldering of head and shield on TEM WIRTH.

(2008) METRO B1 SELI SPA, ROME: works on the soldering of head and shields on TBM HERRENKNECHT.

(2010) ALGHERO CITY MUNICIPALITY: final infrastructural operations for conservation, valuation, and fruition of the Green Cave (Grotta Verde).

(2012) ENAS: extraordinary maintenance of the hydraulic settings of Flumendosa river Dam at Nuraghe Arrubiu and on Mulargia Dam at Monte Su Rei.

(2013/2014) ENAS: extraordinary maintenance of the electromechanics settings of the Dams: Bidighinzu, Sos Canales , Bau Pressiu.

(2017) SELI TECHNOLOGIES Revamping head TBM site Shanxi Cina

(2017) CARBOSULCIS: various carpentry, metal works

(2018) CARBOSULCIS: various carpentry, metal works

(2020) SALINI IMPREGILO/NGE GENIE CIVIL: works on the soldering of head and shields on TBM/METRO PARIS

SOME YARDS

For the consortium for the remediation of Nurra / SIDI SRL, ROCCADORIA MONTE LEONE: revision of bottom drain for Alto Temo Dam.



for ENEL GREEN POWER SPA:
FORDONGIANUS (OR) By-pass DN 350
Hydroelectric plant at TIRSO RIVER

SOME YARDS

For ENEL GREEN POWER SPA, POSADA

(NU) Draining system and

penstock DN 1200 Hydroelectric

plant at Maccheronis Dam



For ENEL GREEN POWER SPA:

DORGALI (NU) penstock DN1500.

Hydroelectric plant

at PEDRA E H'OTHONI DAM

SOME YARDS

For ENEL GREEN POWER SPA: DORGALI

(NU) penstock DN1500.

Hydroelectric plant at

PEDRA E H'OTHONI Dam.



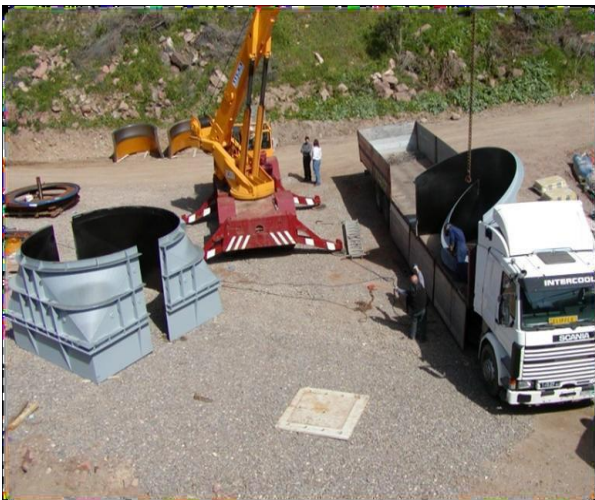
For VORTEX HYDRA - INDUSTRIAL
CONSORTIUM at TEMPIO P. (OT):
bottom drain at MONTE DI DEU Dam

SOME YARDS

For
ENEL GREEN POWER SPA: BUSACHI (OR)

penstock DN 3000,

Hydroelectric plant at TIRSO I DAM

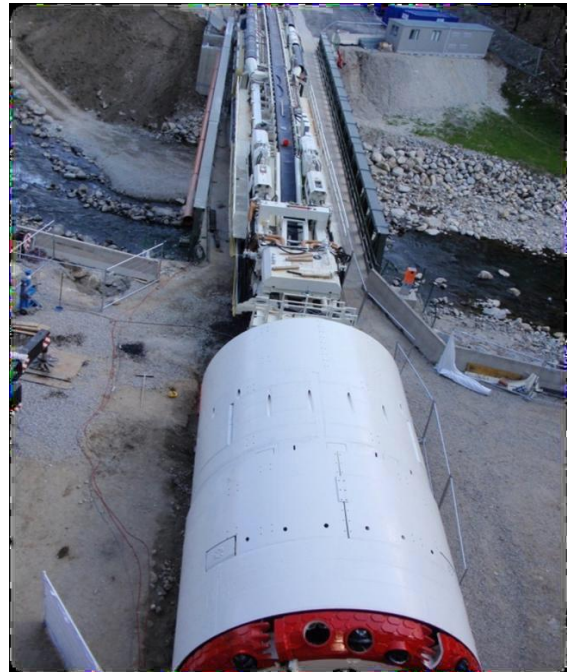


For ENEL GREEN POWER SPA:
FORDONGIANUS (OR) penstock DN
3500, Hydroelectric plant
at TIRSO II Dam

SOME YARDS

ATB – SELI Brennero yard -

Soldering head and shields on TBM



METRO BI – SELI YARD ROME

Soldering head and shields on TBM

SOME YARDS

ALGHERO CITY MUNICIPALITY: Finalization of the infrastructural operation of the conservation, valuation and fruition of GREEN CAVE (GROTTA VERDE).

Details: Arch placed at the access entrance of the cave, in building phase.



Details: finalization and positioning of the Arch.

SOME YARDS

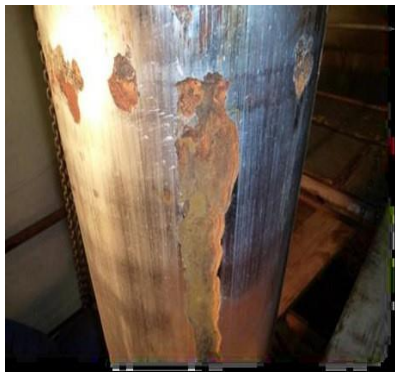


ALGHERO CITY MUNICIPALITY: finalization of the infrastructural operation of the conservation, valuation and fruition of the GREEN CAVE (GROTTA VERDE).

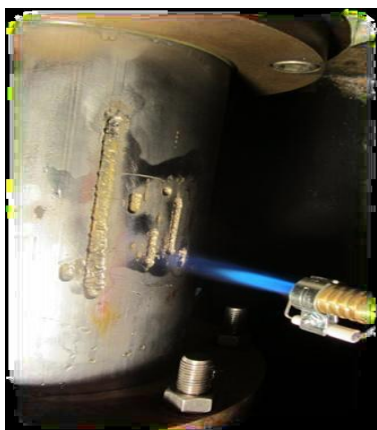
Details: edification of the Tourist Welcoming Center



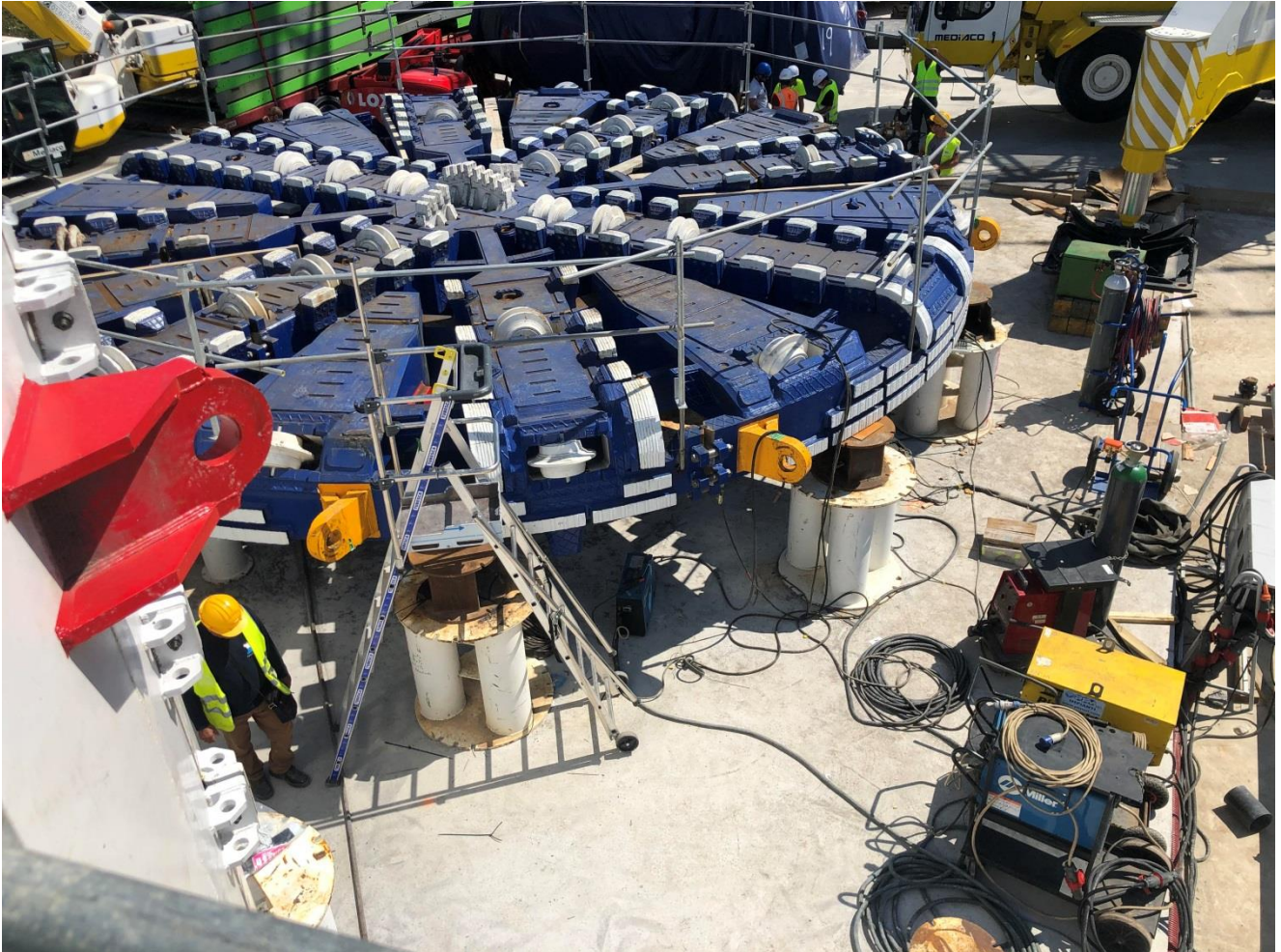
SOME YARDS



Enas: Mulargia and Flumendosa Dams, revision of bottom drain,
right and left, hydraulic cylinder DN 320mm with biocomponents of sealer.



SOME YARDS



SALINI IMPREGILO – NGE GENIE CIVIL

METRO PARIS yard - Soldering head and shields on TBM